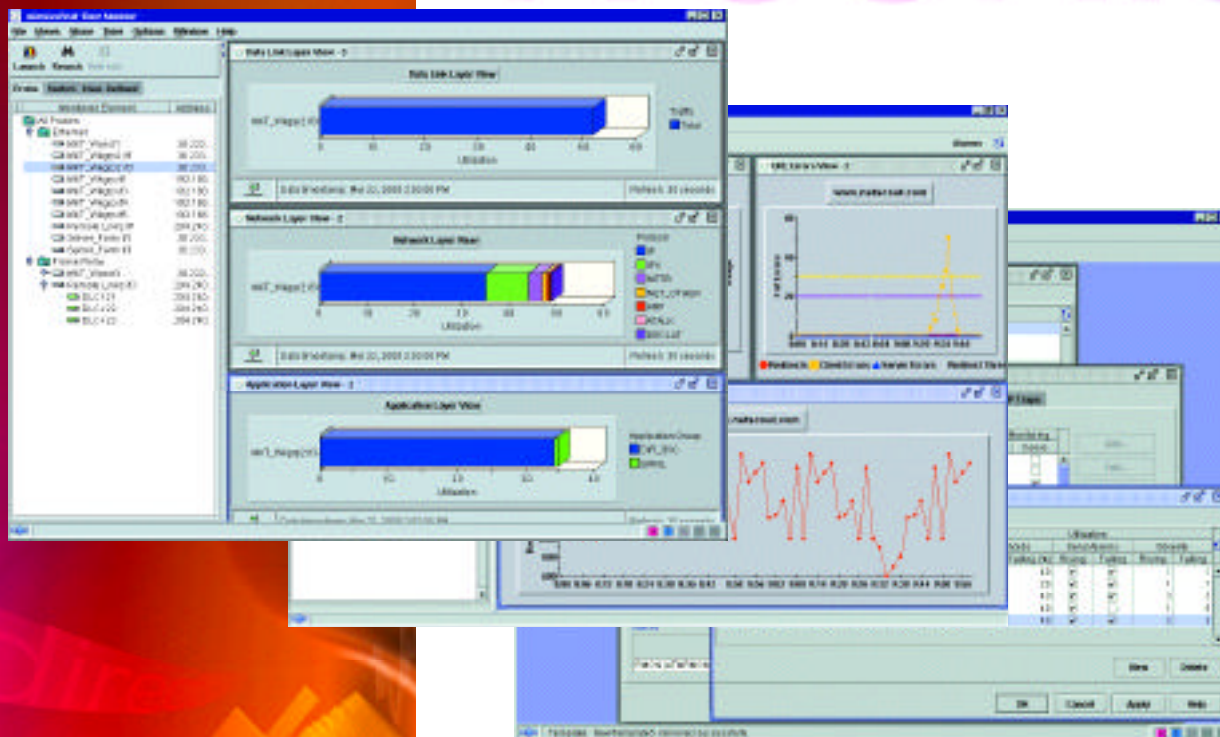


Keep your network  
troublefree

# nGenius Real-Time Monitor™



## Highlights

- Proactively manage networks to prevent service interruptions
- See when and where application and network performance is degrading
- Track application and Web flows across networks in real-time
- Perform sophisticated troubleshooting using Web-based packet analysis
- Determine the root cause of a problem and fix it fast

With nGenius Real-Time Monitor, IT managers now have a comprehensive set of tools to maintain application performance and troubleshoot network problems. The nGenius Real-Time Monitor identifies potential problems by continually tracking both front- and back-office applications, allowing IT staff to detect and analyze traffic issues before they affect the end-user. It also examines web and application flows, aggregates data, and offers packet-level analysis for fast resolution of complex problems.

The network's value in delivering superior customer service, employee productivity and enterprise profitability hinges on corporate applications that are available and responsive when called upon. nGenius Real-Time Monitor gives unrivaled levels of visibility and control over the network, allowing IT managers to turn their technology into a strategic advantage.

### The Real-Time Advantage NetScout Probes™

NetScout System's application-aware probes provide the critical information needed to instantly identify problems. Based on industry standards and designed specifically for monitoring the performance of applications distributed over networks, NetScout Probes deliver unmatched visibility into the network. These dedicated instruments continuously monitor applications and provide information on how the network is being used by application and users — tracking the overall performance of critical business applications. NetScout Probes feature URL monitoring capabilities for measuring application response time and Web site traffic, critical to the success of e-businesses.

### The nGenius Real-Time Monitor Offers:

- Application and Web performance management for optimal service
- Real-time fault isolation and performance monitoring for staying ahead of problems
- Web-based packet analysis for advanced troubleshooting
- A Web-based, scalable and sharable server for fast, easy and secure system configuration

## nGenius Real-Time Monitor™

# Gain Visibility and Control for Superior Network Performance

### Monitor e-Business Applications in Real-Time

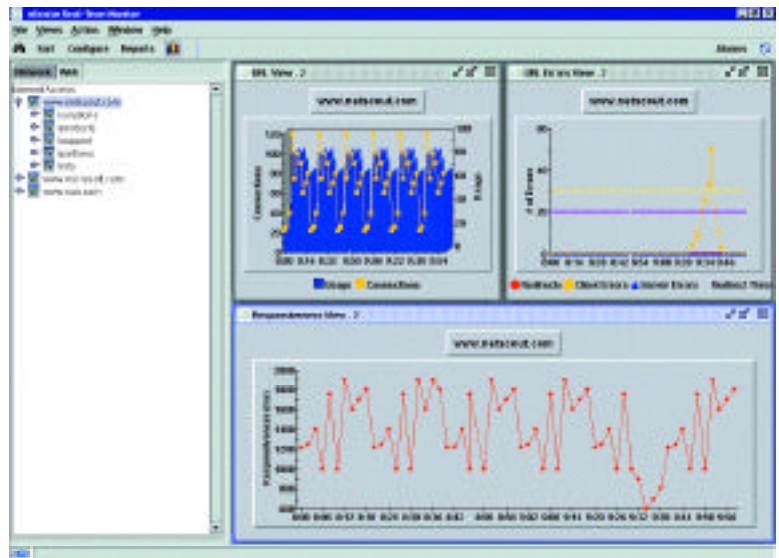
Powerful application and Web flow performance management delivers system-wide visibility to maximize Web site availability. The nGenius Real-Time Monitor measures the performance levels of e-business applications, allowing users to gauge how well Web resources are being used.

#### *Watch the whole network with performance monitoring.*

nGenius Real-Time Monitor:

- Depicts data in logical business groupings and presents network activity by user and application in clear, easy-to-read graphs
- Prevents resource degradation by notifying network professionals when thresholds are reached
- Isolates - at one-minute intervals, in real-time - the source of problems for rapid recovery

Optimizing Web site performance increases customer satisfaction and revenues.



Prevent site slowdowns and breakdowns by monitoring URL response times, rising error rates, and changes in connection requests.

### Stay Ahead of Network Traffic Conditions

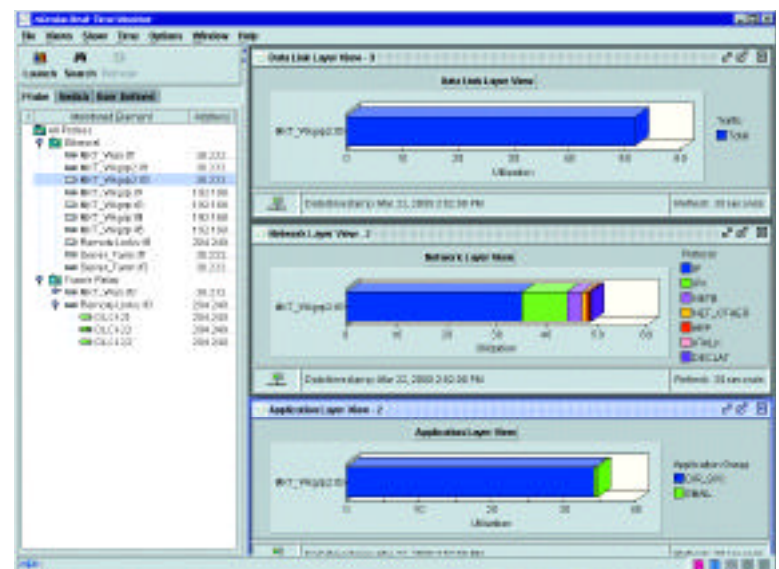
Real-time performance monitoring and fault isolation helps pinpoint problems in three clicks or less. It not only provides real-time data for visibility into network traffic from the application layer to the data link, it also correlates historical data by day, week and month offering a basis for comparison.

#### *Clarify network operations with traffic management.*

nGenius Real-Time Monitor:

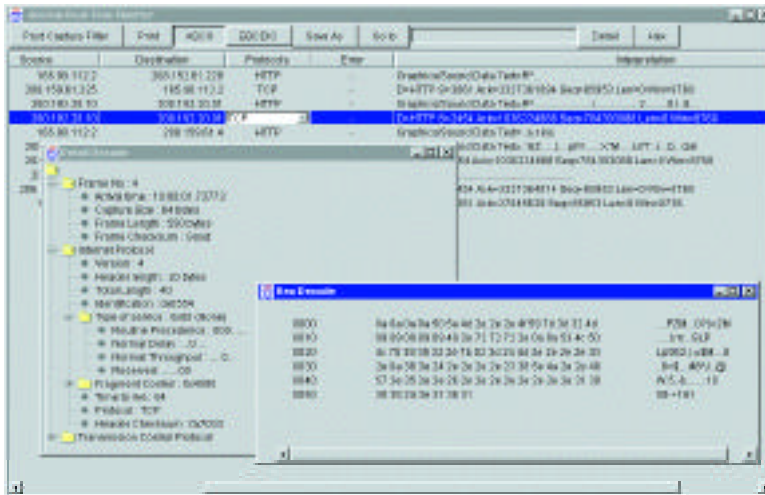
- Includes traffic utilization alarms that warn of high segment and application activity to identify what generated the increase in volume
- Provides information on what applications are being used and by whom
- Provides multi-user access via Web browser that allows users to create personalized settings and manage networks from remote locations

Maintaining a network operating at top efficiency increases employee productivity and optimizes network resources.



Critical information in the first view provides statistics on data-link layer and application-layer on one screen, with drill-down capability for exploring details.

# nGenius Real-Time Monitor™



Capture files, seven-layer decodes, and hex traces may all be viewed simultaneously on the desktop.

## Track Network Problems to the Packet Level, in Real-Time

Advanced troubleshooting is quick and efficient with easy-to-use packet analysis. It offers sophisticated filtering, capturing, and decoding functions necessary to isolate faults in the network.

### Fix the most complex problems with packet analysis.

nGenius Real-Time Monitor:

- Uses Web-based access to packet analysis tools in both Unix and NT environments for platform flexibility
- Includes powerful, easy-to-use, filtering capabilities that accommodate all key industry protocols to address hundreds of situations
- Offers multi-user access to shared capture files to enable collaborative troubleshooting

Powerful packet analysis helps network professionals resolve difficult problems rapidly, decreasing network downtime and user frustration.

## Speed Network Configuration for Performance Management

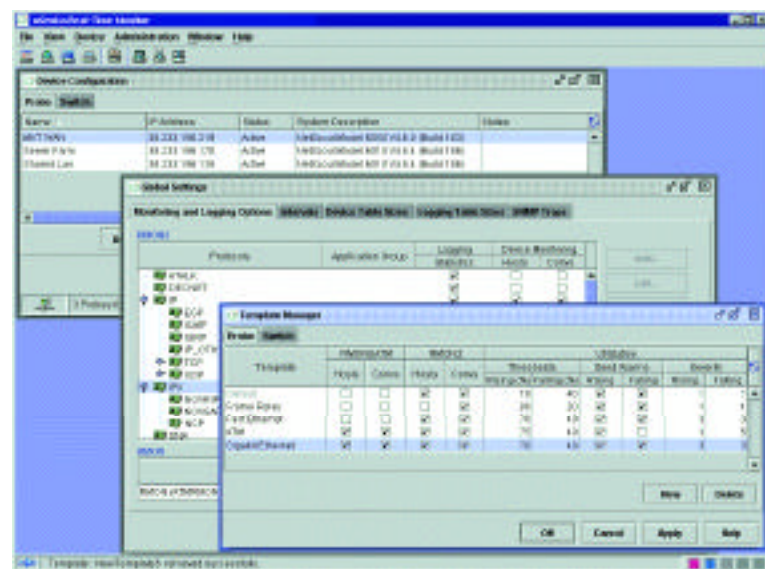
Out-of-the-box templates available through a scalable, common platform streamline the process of configuring systems for real-time monitoring. Determining what data will be gathered from where -- as well as setting security levels -- may be quickly accomplished using the system's highly-intuitive software.

### Simplify set-up using a scalable and sharable server.

nGenius Real-Time Monitor:

- Offers selective read and write privileges defined by user role to offer visibility to network performance
- Features Web-based, Unix or NT support for access anytime, anywhere
- Provides an easy-to-learn and full-featured user interface that can be used by novices and experts

Easy-to-use administration features ensure rapid deployment of application monitoring tools to maximize network performance.

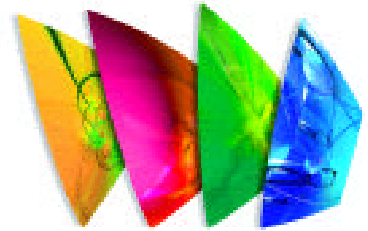
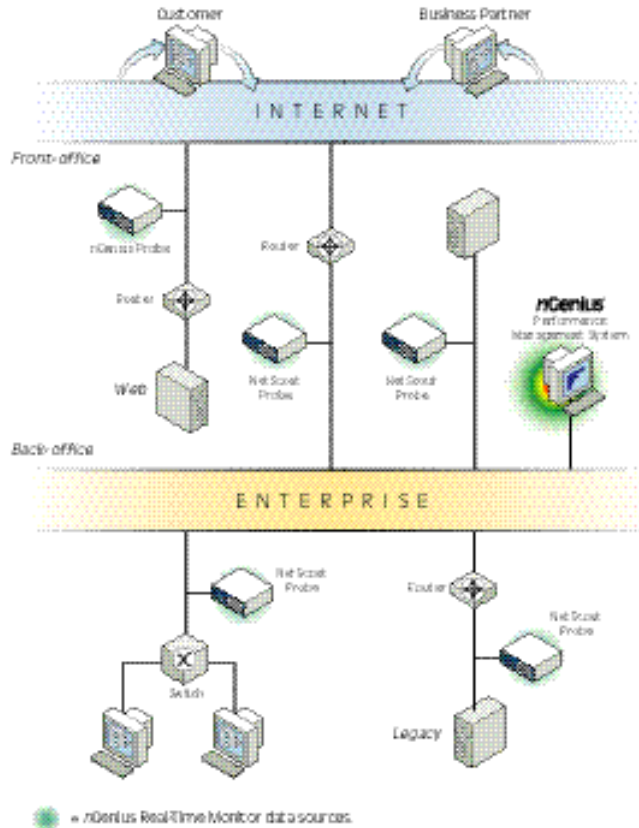


Out-of-the-box configuration templates provide easy and fast set-up for monitoring mission-critical applications, and offer the flexibility to customize where needed.

# nGenius Real-Time Monitor™

## Pinpoint and fix network problems proactively

nGenius Real-Time Monitor uses strategically placed application-aware probes to instantly identify problems, offering IT managers control and visibility into networks.



## nGenius™

Performance Management System for e-Business

The nGenius Performance Management System is comprised of:

- **nGenius Application Service Level Manager™** – Delivers application and network service level reporting that reflects actual business processes
- **nGenius Capacity Planner™** – Profiles and predicts application, network and device traffic patterns to establish future network resource requirements
- **nGenius Real-Time Monitor™** – Proactively detects, analyzes and rapidly resolves e-business application problems from the Web site to the back-office

...it's nGenius

## System Requirements

### Server System Requirements for nGenius Real-Time Monitor

Operating System	Hardware Platform	RAM	Disk Space*
Solaris v2.6 or 2.7	SUNSPARC	512MB - 1 GB	8-24 GB
HP/UX 11.0	HP 9000, Series 700 to 800	512MB - 1 GB	8-24 GB
AIX v4.3	IBM RS/6000	512MB - 1 GB	8-24 GB
Windows NT 4.0 with Service Pack 5	Intel Pentium III	512MB - 1 GB	8-24 GB

\*Recommended disk space needed to enable memory for logging.

### Client Browser System Requirements

Operating System	Hardware Platform	Browser	Disk Space*
Solaris v2.6 or 2.7	SUNSPARC	Netscape v4.7 or 4.73	1 GB
HP/UX 11.0	HP 9000, Series 700 to 800	Netscape v4.7 or 4.73	1 GB
AIX v4.3	IBM RS/6000	Netscape v4.7 or 4.73	1 GB
Windows NT v4.0 Server	Intel Pentium III	Netscape v4.7 or 4.73	1 GB
Windows 95, Windows 2000		Or Internet Explorer v5.01	

\*Recommended disk space needed for operating system and browser.

### Topologies Monitored

Switched LAN	Gigabit, FastEthernet, FastEtherChannel, VLAN
Shared LAN	Ethernet, Token Ring
High-speed backbones	FDDI, OC3 ATM
WAN	Frame Relay, T1/E1, Channelized T1/E1, Demarcation-point T1D/E1D, T3/E3, DS3/E3 ATM DS3 Frame

CC-0066-00



## NetScout.

Because the network is the business.™

NetScout Systems, Inc.  
4 Technology Park Drive  
Westford, MA 01886

Tel: 978-614-4000, 888-999-5946

Fax: 978-614-4004

e-mail: [info@netscout.com](mailto:info@netscout.com)

Web: [www.netscout.com](http://www.netscout.com)

Copyright © 2000 NetScout Systems, Inc. All rights reserved worldwide. NetScout is a registered trademark and the NetScout logo, "Because the network is the business", nGenius, nGenius Application Service Level Manager, nGenius Capacity Planner, nGenius Real-time Monitor, and nGenius Probe are trademarks of NetScout Systems, Inc. Other brand and product names are trademarks of their respective holders. NetScout Systems reserves the right to make changes in its technical information and specifications and service and support programs.