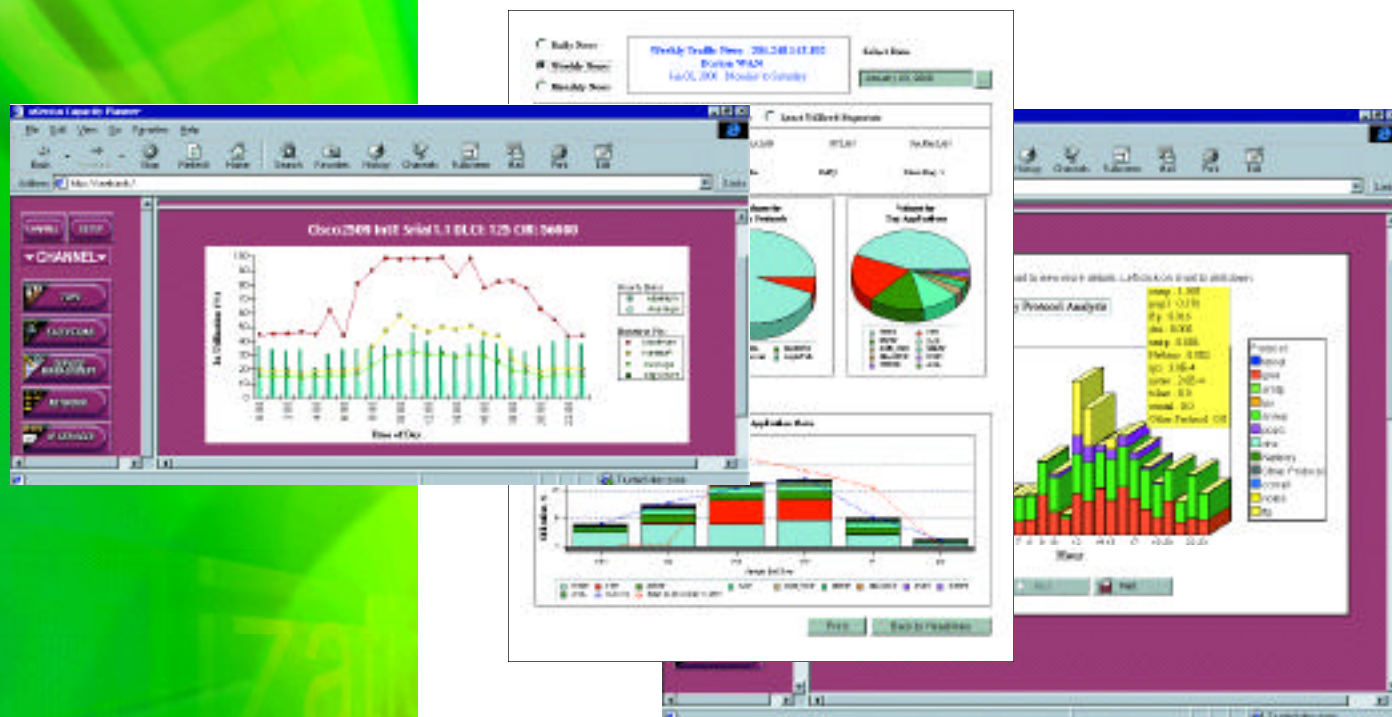


Base capacity forecasts on business facts

nGenius Capacity Planner™



Highlights

- Forecast network resource needs based on historical traffic and utilization patterns
- Make educated capacity planning decisions based on comprehensive, business-relevant facts
- Profile network usage to identify areas that will benefit most from resource modifications
- Justify expenditures by reporting how mission-critical applications affect network capacity
- Analyze the entire network from segment bandwidth to equipment utilization

With nGenius Capacity Planner, businesses now have a forecasting solution for building and budgeting corporate networks according to their organizational needs. The nGenius Capacity Planner profiles, predicts, and reports on network and application usage trends by analyzing a rich collection of data sources, revealing timely, accurate and resource-saving information.

Hard data, well presented, makes the best case for convincing management to increase bandwidth or reconfigure unused capacity. The nGenius Capacity Planner presents historical network and application traffic patterns to give planners insight into network utilization, allowing them to forecast when network capacity will reach its limit. With facts in hand, management can take the guesswork out of network capacity planning.

The Capacity Planning Advantage - NetScout Probes™

NetScout System's application-aware probes provide the critical visibility IT and business managers need to tie network usage back to business operations. NetScout Probes deliver superior information on network bandwidth consumption by application and user – tracking the overall traffic patterns of critical business applications. nGenius Capacity Planner is the only trend reporting package on the market to take full advantage of the rich application traffic data gathered from NetScout Probes.

nGenius Capacity Planner Delivers:

- Extensive reporting on most network devices and applications
- Application traffic detail for understanding business needs behind bandwidth demand
- Highly-accurate Traffic Signatures™ for identifying normal traffic patterns driven by cyclical business processes
- Predictive analysis for anticipating future resources required to support business operations

nGenius Capacity Planner™

Base Bandwidth Decisions on Actual Business Needs

Build Better Networks With Richer Information Sources

nGenius Capacity Planner trends data from all points in the network including network equipment, servers, and NetScout's application-aware probes. Network planners can apply this broad set of information to devise and deploy an economical and robust infrastructure.

Present the total picture by polling extensive data sources.

nGenius Capacity Planner:

- Provides key statistics such as memory, utilization, and availability for nearly any device in the network, including routers, switches, servers, firewalls, load balancers, and CSU/DSUs
- Establishes network and application usage trends using NetScout Probes
- Offers easy customization and reporting on any SNMP MIB

Rich sources of data allow for a more comprehensive analysis of network and application consumption and more informed decisions on costly capacity changes.

Tie Network Use to Business Activity - Justify Resource Demands

Network planners need to understand which applications are consuming bandwidth to ensure IT budgets are supporting business needs, rather than non-business activity. The nGenius Capacity Planner provides in-depth, quantifiable insight into which applications are being run over the network and who is using them.

Obtain crucial management information with application reporting.

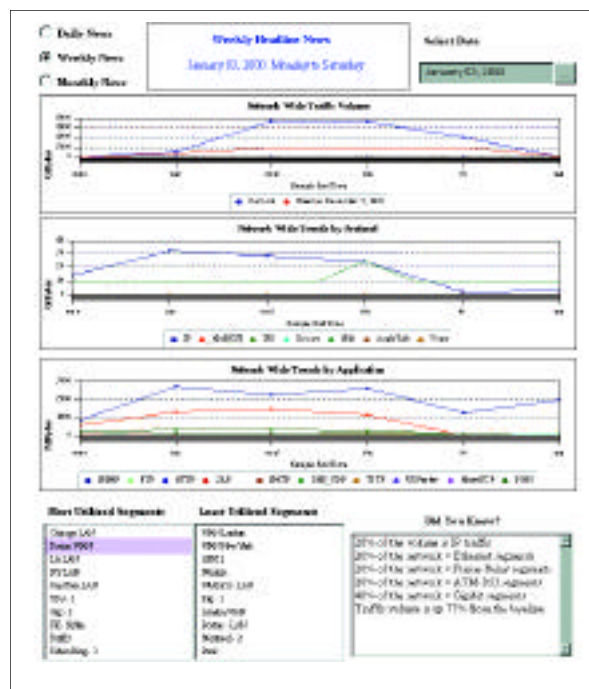
nGenius Capacity Planner:

- Presents executive-reports that highlight which applications place the greatest demands on the enterprise network
- Offers out-of-the-box reports that automatically identify the top ten most- and least-utilized links on a single screen
- Includes sophisticated drill-down reports that identify which applications cause congestion and which users contribute to it

Improving network performance and reconfiguring bandwidth can be done quickly and painlessly when both IT and business executives clearly understand how application usage affects network consumption.

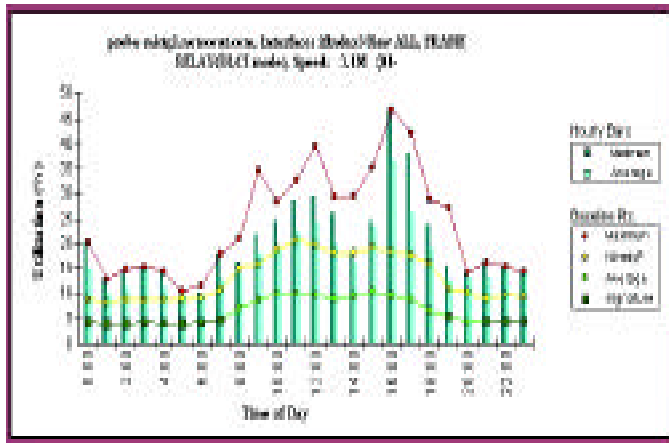


Trend information gathered from the industry's widest breadth of data sources, including: Ethernet; Frame Relay; ATM; and RMON2 application statistics from network devices and NetScout Probes.



Headline News presents network-wide traffic volumes and application trends, as well as the top ten most- and least-utilized segments.

nGenius Capacity Planner™



Graphs produced by Traffic Signature technology allow users to compare daily utilization against monthly baseline "fingerprints."

Identify "Normal" Network Behavior

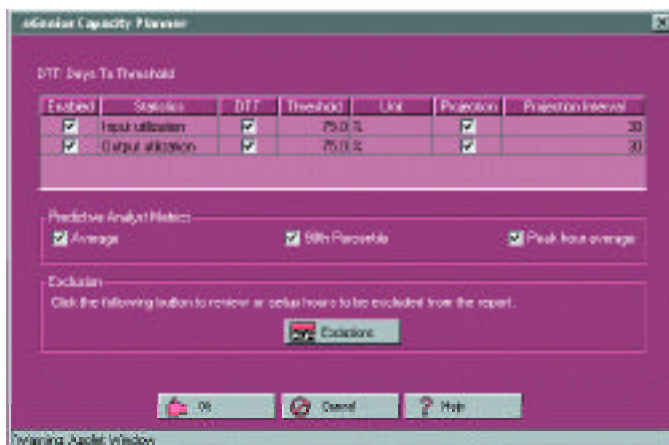
Profiling network, application and device statistics helps planners spot trends and patterns that are characteristic of network activity. Only nGenius Capacity Planner offers maximum, 90th percentile and average baselines using unique Traffic Signature technology. These baselines give network planners a solid understanding of traffic patterns resulting from cyclical business processes so they can precisely provision networks for optimal performance.

Reveal patterns using Traffic Signature technology.

nGenius Capacity Planner:

- Identifies recurring and random network, application and device patterns using patent-pending technology
- Alarms on network events that deviate from normal traffic patterns and may require immediate attention
- Adapts baselines automatically to reflect traffic patterns as they change over time, minimizing tedious administration

Traffic Signatures can differentiate between normal and aberrant traffic patterns allowing network planners to make better decisions about network tuning and capacity upgrades.



Users can specify business-hour exclusions and create "Days to Threshold" (DTT) forecasts based on multiple baselines.

Accurately Forecast Future Bandwidth Needs

Predictive analysis helps network planners accurately forecast network or equipment resizing long before network performance degrades. nGenius Capacity Planner uses predictive analysis to provide an early warning system to ensure that network resources are planned for and deployed well in advance of their need.

Optimize network resource allocation with predictive analysis.

nGenius Capacity Planner:

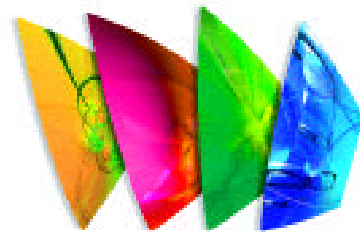
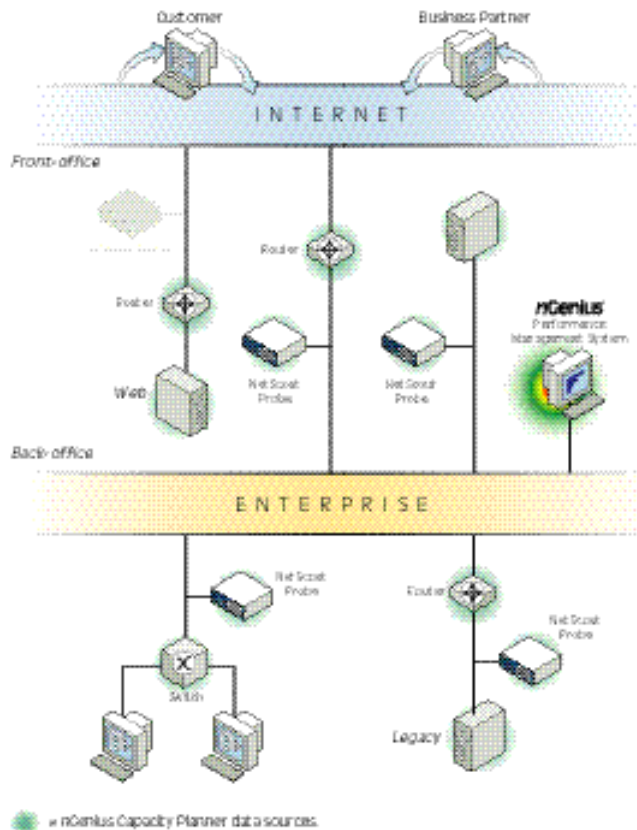
- Forecasts network and application usage into the future by applying linear regression algorithms to traffic baselines
- Creates highly-accurate forecasts using 90th percentile baselines -- a metric that represents the most significant network traffic patterns
- Allows exclusion zones, such as non-business hours, for more precise business-relevant predictions of capacity needs

Knowing ahead of time when network upgrades will be needed allows network planners to control costs and proactively avoid network congestion problems.

nGenius Capacity Planner™

Know your network needs and costs, cut network waste

nGenius Capacity Planner bases its highly-accurate forecasts on data gathered from probes, switches, servers and routers: richer data let managers make better IT decisions.



nGenius™

Performance Management System for e-Business

The nGenius Performance Management System is comprised of:

- **nGenius Application Service Level Manager™** – Delivers application and network service level reporting that reflects actual business processes
- **nGenius Capacity Planner™** – Profiles and predicts application, network and device traffic patterns to establish future network resource requirements
- **nGenius Real-Time Monitor™** – Proactively detects, analyzes and rapidly resolves e-business application problems from the Web site to the back-office

...it's nGenius

System Requirements

Server System Requirements for nGenius Capacity Planner

Operating System	Hardware Platform	RAM	Disk Space*
Windows NT 4.0 with Service Pack 6	Intel Pentium III	512MB - 1 GB	8-24 GB
Windows 2000		512MB - 1 GB	8-24 GB

Server System Requirements for WebCast™

Solaris v2.6 or 2.7	SUNSPARC	512MB - 1 GB	8-24 GB
HP/UX 11.0	HP 9000, Series 700 to 800	512MB - 1 GB	8-24 GB
AIX v4.3	IBM RS/6000	512MB - 1 GB	8-24 GB
NT 4.0 with Service Pack 5	Intel Pentium III	512MB - 1 GB	8-24 GB

*Recommended disk space needed to enable memory for logging.

Client Browser System Requirements for nGenius Capacity Planner

Operating System	Hardware Platform	Browser	Disk Space*
Windows NT v4.0 Server Windows 95, Windows 2000	Intel Pentium III	Internet Explorer v5.01	1 GB

*Recommended disk space needed for operating system and browser.

Client Browser System Requirements for WebCast

Solaris v2.6 or 2.7	SUNSPARC	Netscape v4.7, 4.73	1 GB
HP/UX 11.0	HP 9000, Series 700 to 800	Netscape v4.7, 4.73	1 GB
AIX v4.3	IBM RS/6000	Netscape v4.7, 4.73	1 GB
Windows NT v4.0 Server Windows 95, Windows 2000	Intel Pentium III	Netscape v4.7, 4.73	1 GB

Topologies Monitored

Switched LAN	Gigabit, FastEthernet, FastEtherChannel, VLAN
Shared LAN	Ethernet, Token Ring
High-speed backbones	FDI, OC3 ATM
WAN	Frame Relay, T1/E1, Channelized T1/E1, Demarcation-point T1D/E1D, T3/E3, DS3/E3 ATM DS3 Frame



NetScout.

Because the network is the business.™

NetScout Systems, Inc.
4 Technology Park Drive
Westford, MA 01886

Tel: 978-614-4000, 888-999-5946

Fax: 978-614-4004

e-mail: info@netscout.com

Web: www.netscout.com

Copyright © 2000 NetScout Systems, Inc. All rights reserved worldwide. NetScout is a registered trademark and the NetScout logo, "Because the network is the business", nGenius, nGenius Application Service Level Manager, nGenius Capacity Planner, nGenius Real-time Monitor, nGenius Probe, and WebCast are trademarks of NetScout Systems, Inc. Other brand and product names are trademarks of their respective holders. NetScout Systems reserves the right to make changes in its technical information and specifications and service and support programs.