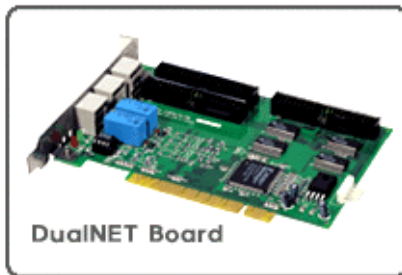


» Perfect & Simple Security Solution!

# DualNET

## H/W & S/W Installation

---



FNET Co., Ltd.

KFSB Bldg. 10th. Fl. 16-2

Yoido-dong, Youngdeungpo-ku,  
Seoul 150-010, Korea

Tel)+82-2-761-5885

Fax)+82-2-761-5909

**FNET Co., Ltd.**

1. DualNET

-  
-  
-  
-

2. DualNET

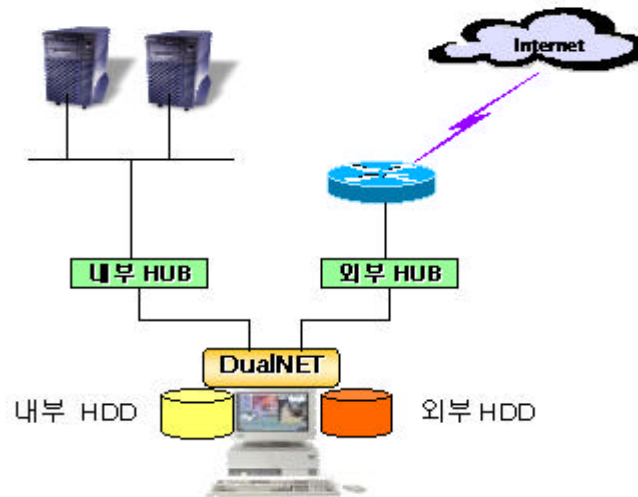
3. DualNET

-  
-  
-

4.

## 1. DualNET

가 가 , , 가  
 . 가 .  
 , 가  
 DualNET



[ DualNET ]

---

- Windows 95/98/Me/NT/2000

- 가

-

-

- 가 가

- LED

- LED

- 가 , .

- , 가 (Multiple OS) .

- 가 .

---

- IBM (Pentium MMX )

- Award BIOS(AMI BIOS), Pheonix BIOS HDD PnP

- 가 IDE

- 5.25 "

- O.S

- Windows 2000, Windows98, Widows95 Windows-NT

- Pentium MMX

- DualNET PCI Board (1 )
- 5.25 "Switch (1 )
- HDD (1 )
- 6 (1 )
- ( ) (1 )
- 20cm (1 )
- (4 )
- (1 )
- (1 )

[ 가 CD ]



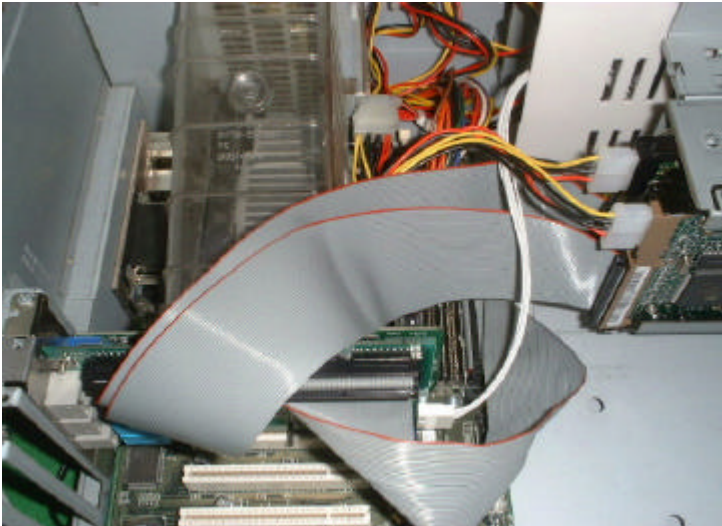
[ ]

2. DualNET

- Off
- Master
- DualNET PCI
- 5.25 " 6 3
- 5.25 "
- Primary HDD , DualNET PCI
- DualNET PCI HDD
- DualNET PCI HDD
- DualNET PCI 20 cm Patch N.I.C
- DualNET PCI Link1
- DualNET PCI Link2
- (RJ -45 Crossed , RJ-11 Null 1:1 )

2.1 DualNET PCI

- DualNet PCI PCI .



[DualNET PCI ]

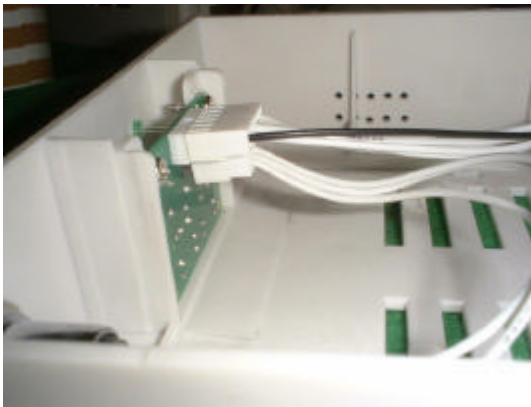
2.2 5.25 6

- DualNET 5.25 " 3

6 가 .

- 3 가

- 6 PC DualNET PCI



[6 ]



[PCI 6 ]

2.3 5.25 "

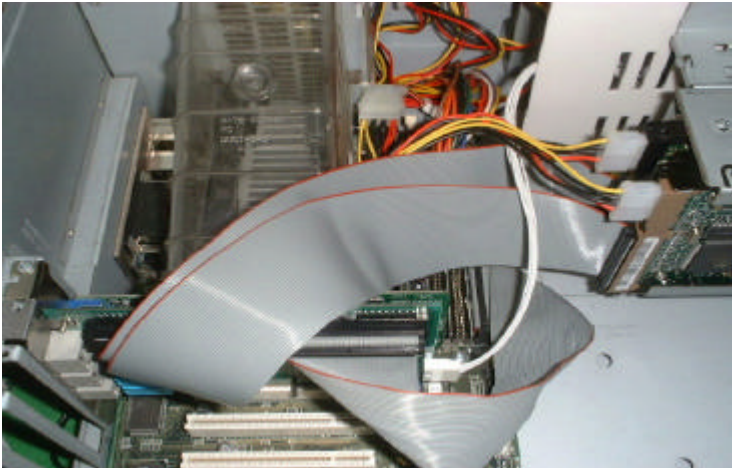
5.25 "



[DualNET 5.25 " ]

2.4 DualNET PCI HDD

- DualNET PCI 40



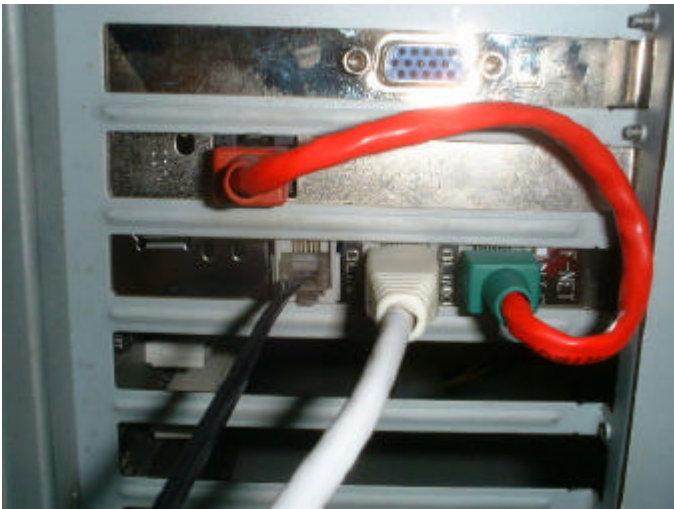
[DualNET PCI ]

- DualNET PCI HDD
- 5.25 "
- 5.25 "
- DualNET PCI HDD



[PCI ]

2.5 DualNET PCI LAN



[DualNET PCI ]

- LAN	DualNET PCI	N.I.C	20 cm Patch
.	(	)	
- PCI	:	Link1	.( )
- PCI	:	Link2	.( )

---

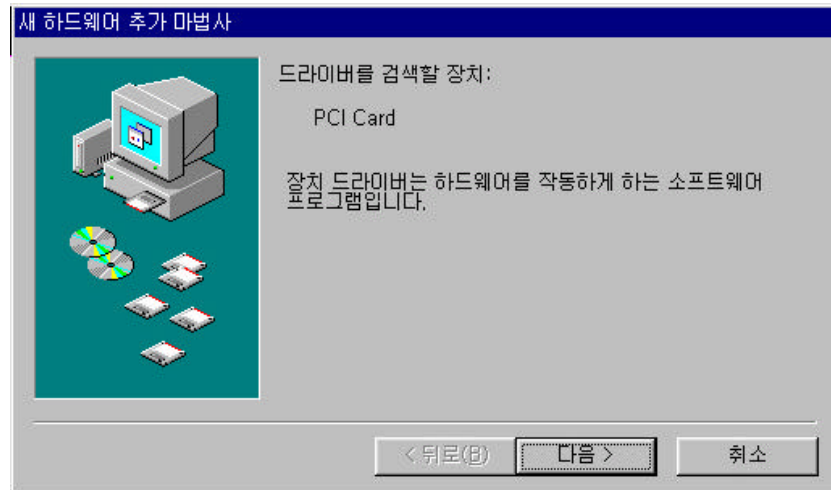
<div></div>	RJ11	RJ45	.
RJ45			
RJ11	1:1		.

---

### 3. DualNET

#### 3.1 DualNET PCI

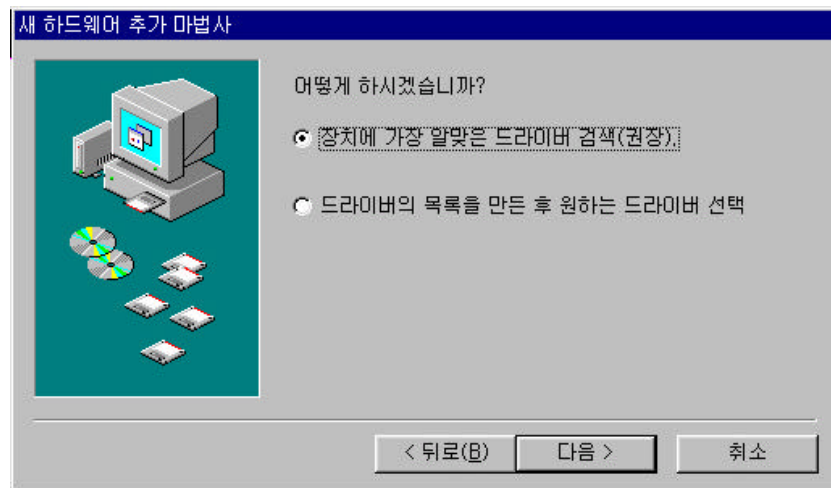
[ Windows98 ]



[ DualNET PCI ]

- DualNET PCI

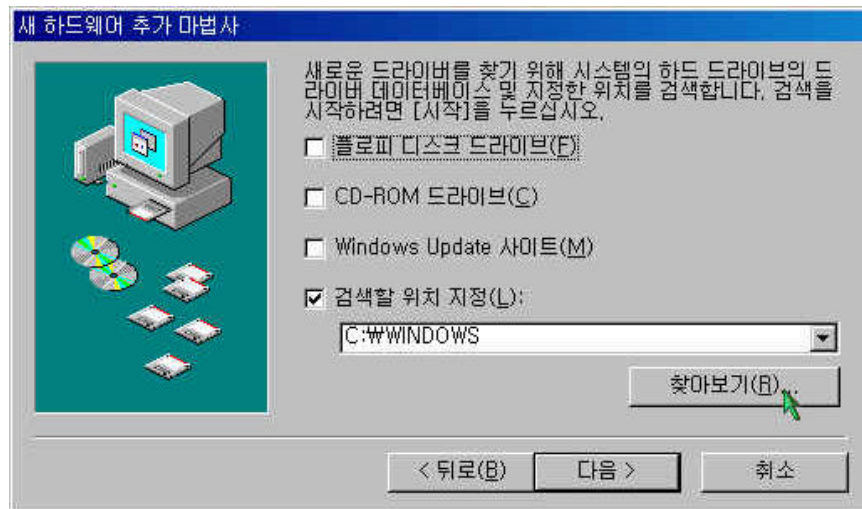
. [ ] .



[ DualNET PCI ]

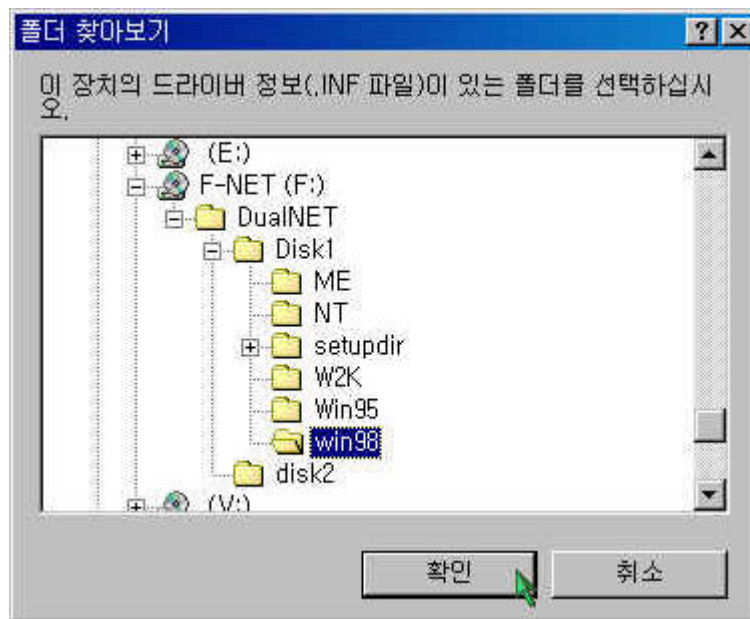
- DualNET PCI < 가 ( )> [ ]

.



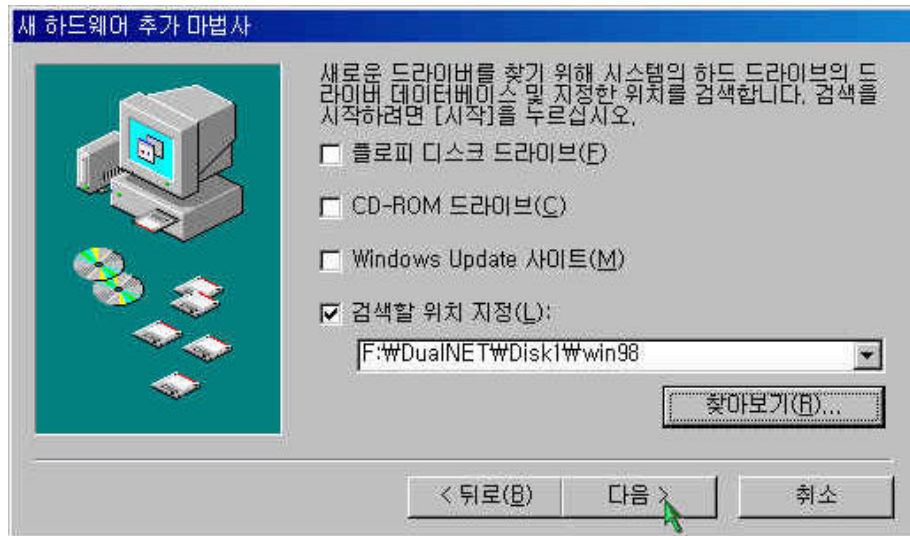
[DualNET PCI ]

- CD , [ (L) ]  
[ ] .



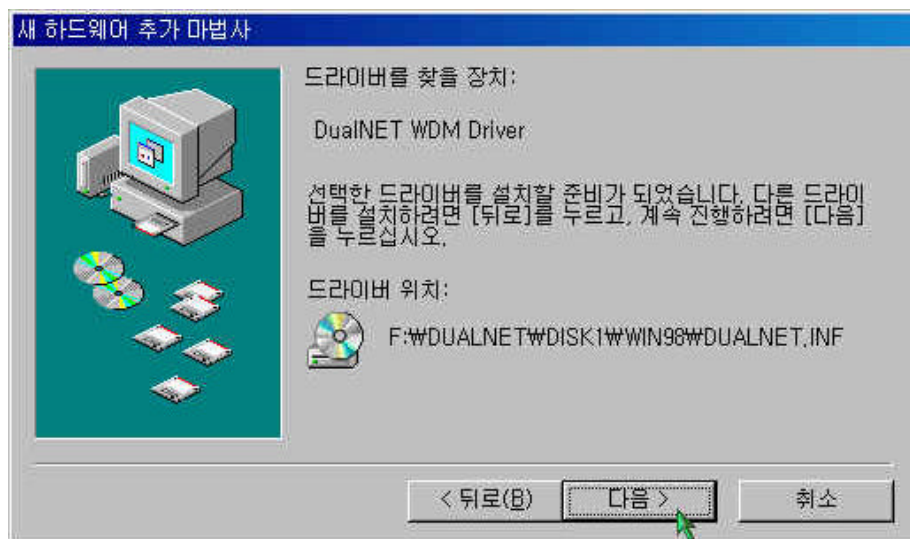
[DualNET PCI ]

- [ ] CD [DualNET]->[Disk1] -  
> [Win98] [ ] .



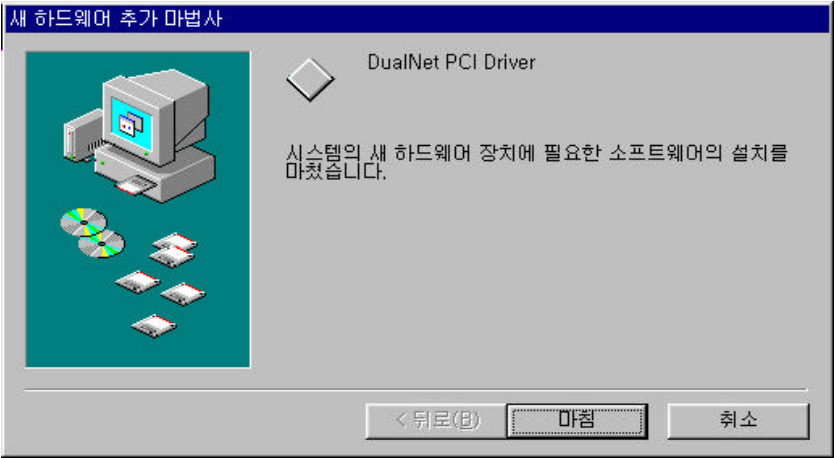
[ ]

- 3.5 가 [ ] .



[ ]

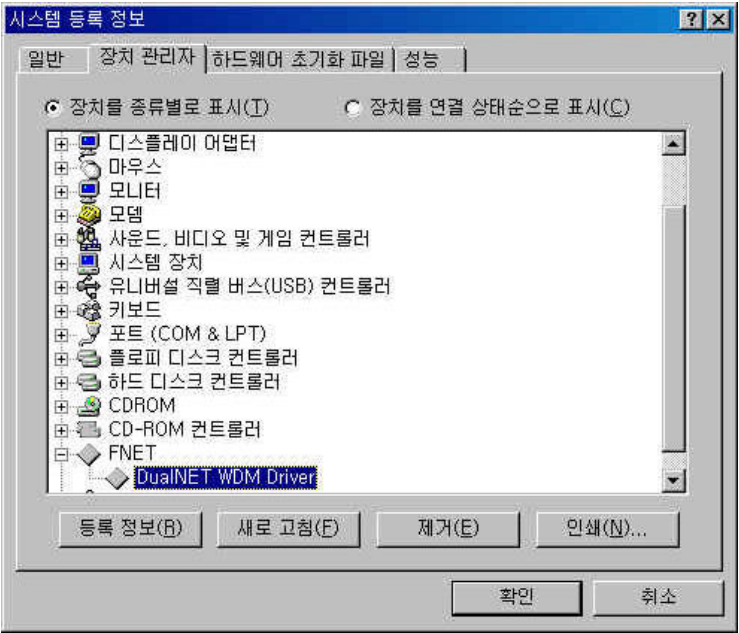
- 3.6 . [ ] .



[DualNET PCI ]

- DualNET PCI 가 . [ ]

- DualNET PCI 가 > > >



[DualNET PCI ]

- F-NET DualNET WDM Driver

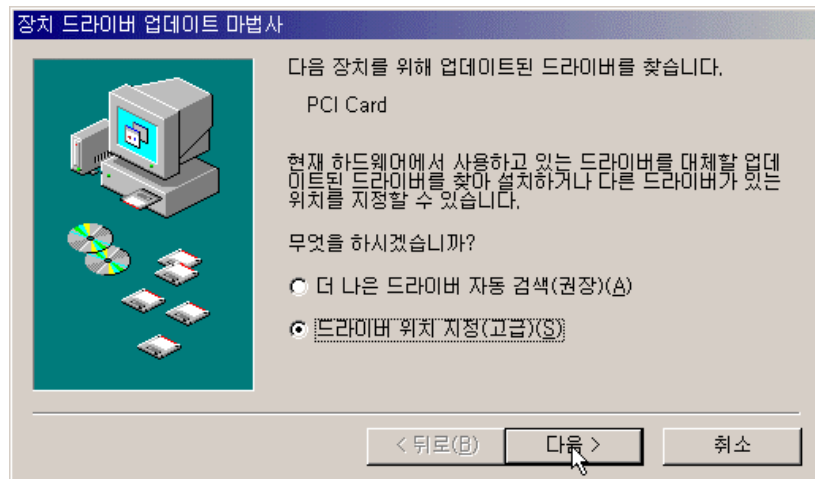
[Windows ME ]



[DualNET PCI ]

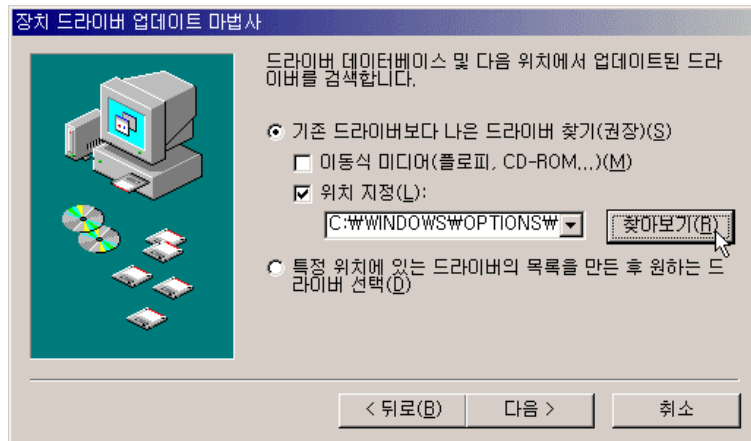
- DualNET PCI

. [ ] .



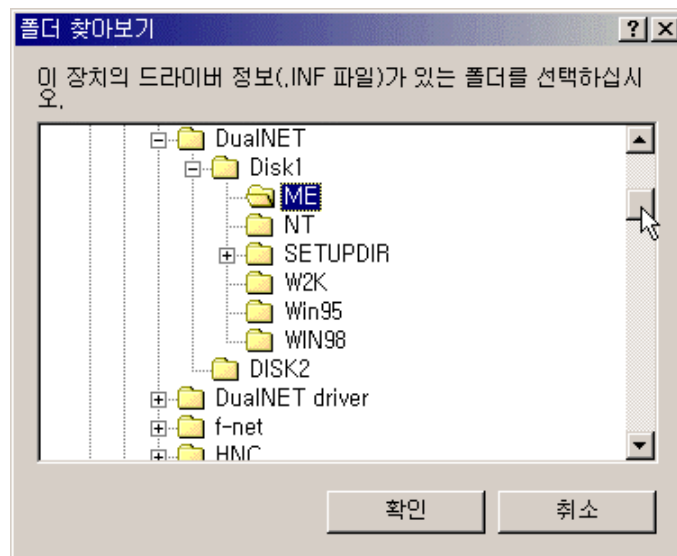
[DualNET PCI ]

- < ( )> [ ] .



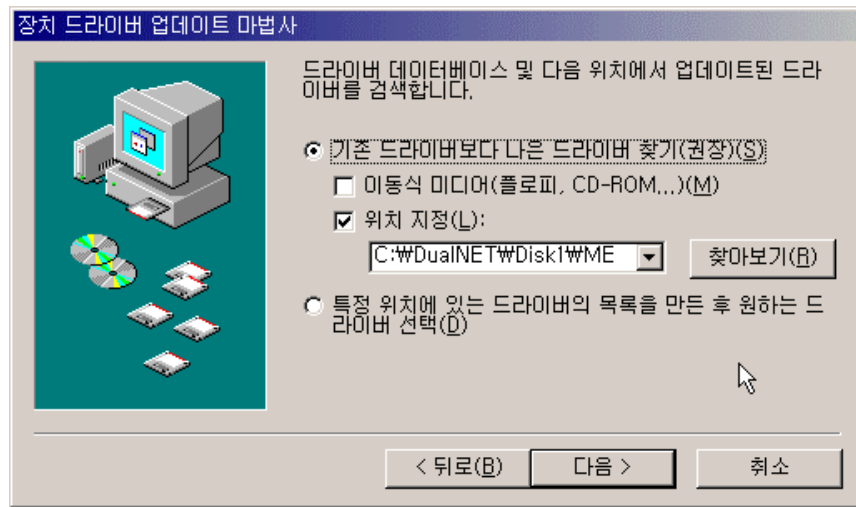
[DualNET PCI ]

- < > [ ] DualNET .



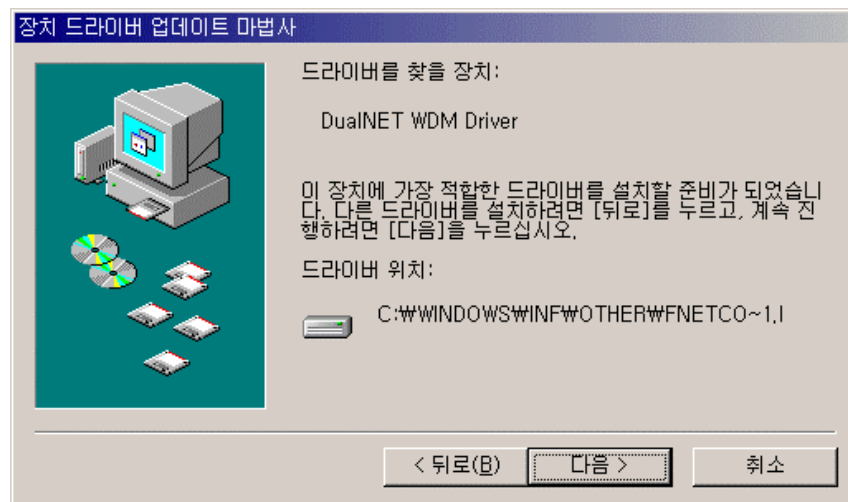
[DualNET PCI ]

- [ ] .



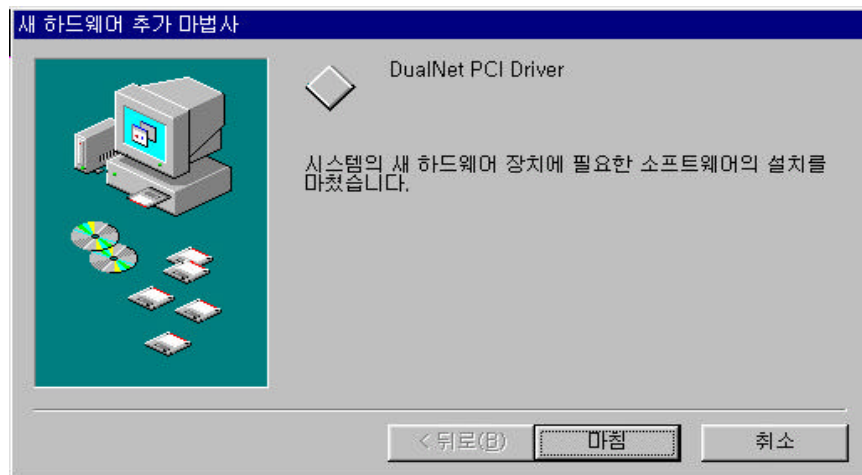
[DualNET PCI ]

- [ ] .



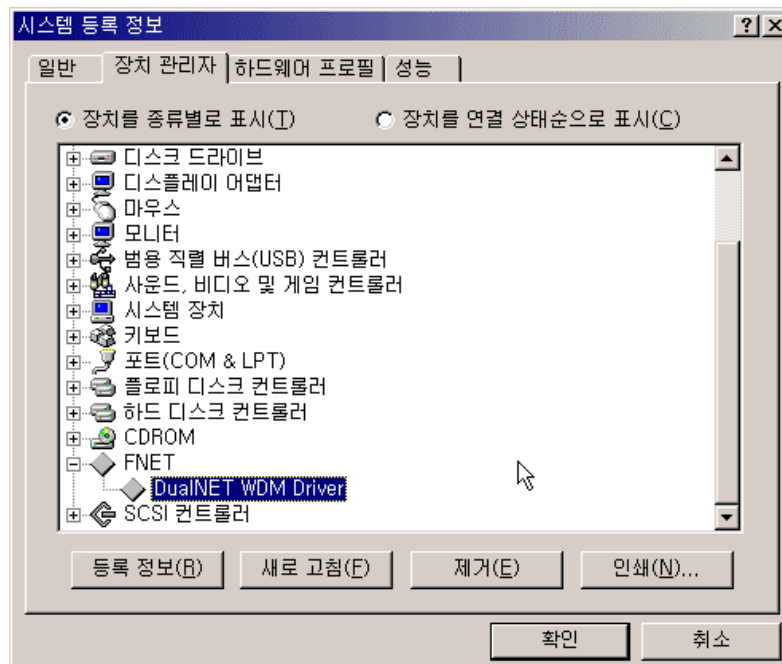
[DualNET PCI ]

- [ ] .



[DualNET PCI ]

- DualNET PCI 가 . [ ]
- DualNET PCI 가 > > >

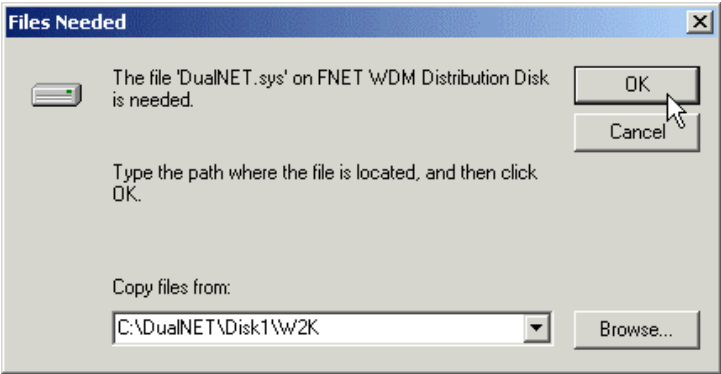


[DualNET PCI ]

- F-NET DualNET PCI Driver

[ Windows 2000 ]

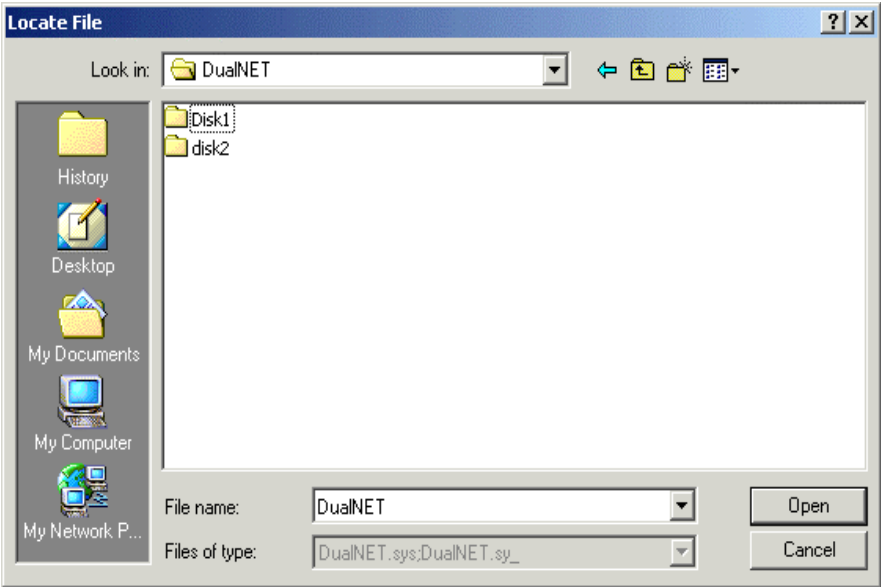
- DualNET PCI PC OS PnP



[ 3.17 DualNET PCI ]

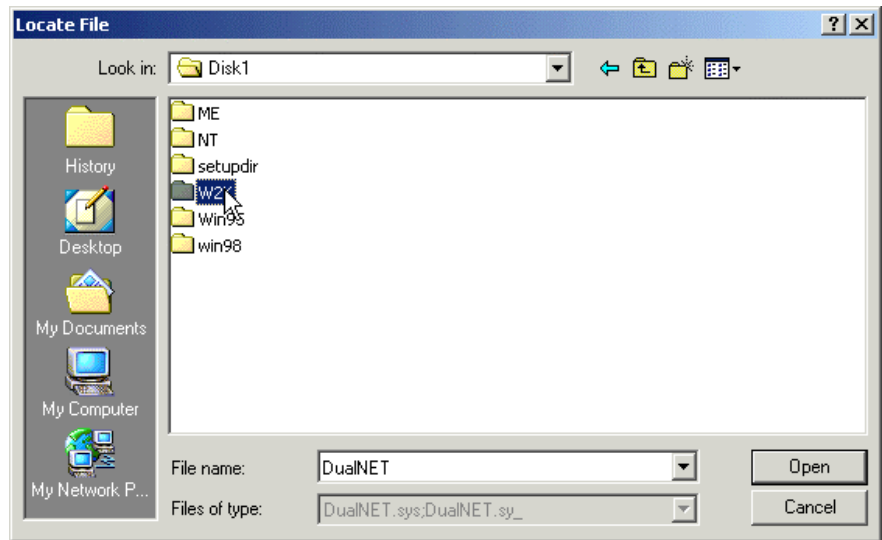
- [ Browse... ] DualNET.sys DualNET PCI

- DualNET , Disk1



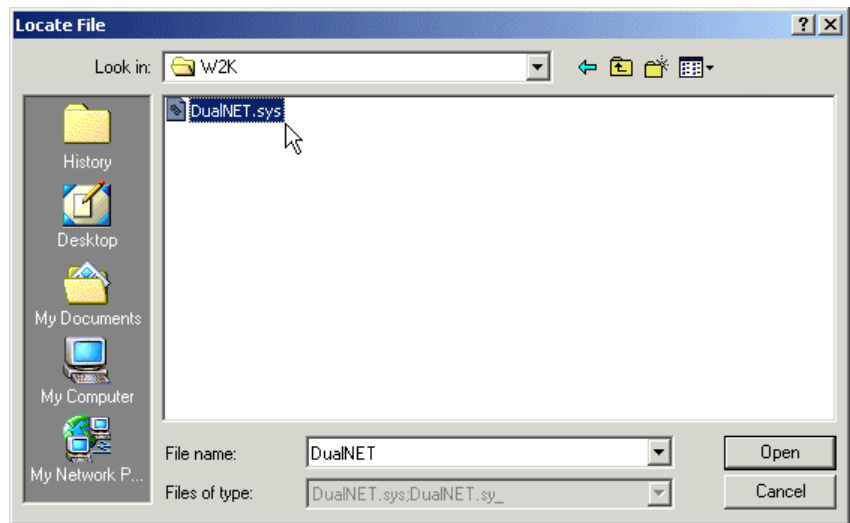
[ DualNET PCI ]

- [W2K] Windows 2000

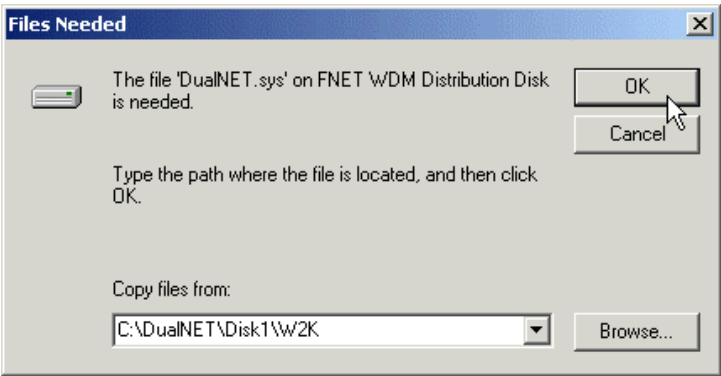


[Windows 2000 DualNET PCI ]

- DualNET.sys [Open]

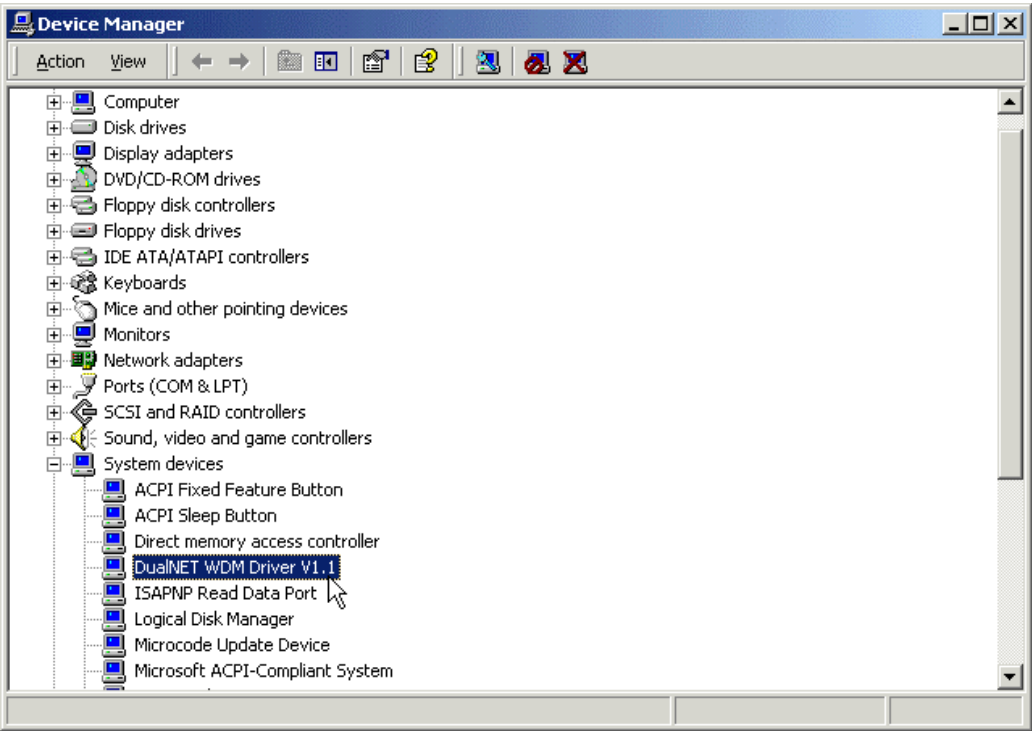


[DualNET PCI ]



[DualNET PCI ]

- 가 [OK]
- DualNET PCI 가  
[ ] -> [ ] -> [ ] -> [ ]



[DualNET PCI ]

[Windows NT ]

- Windows NT Windows 95/98/ME/2000 OS DualNET PCI

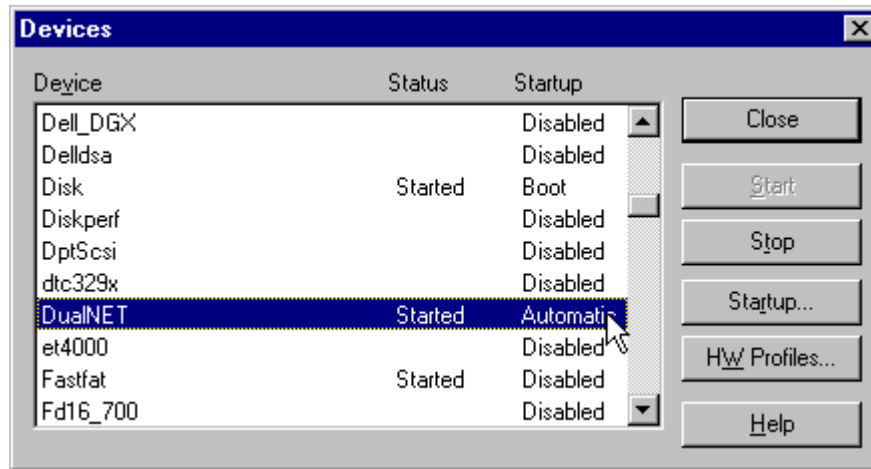
가 .

- DualNET PCI .

- DualNET [setup] S/W DualNET

PCI 가 .

- [ ] -> [ ] DualNET PCI 가

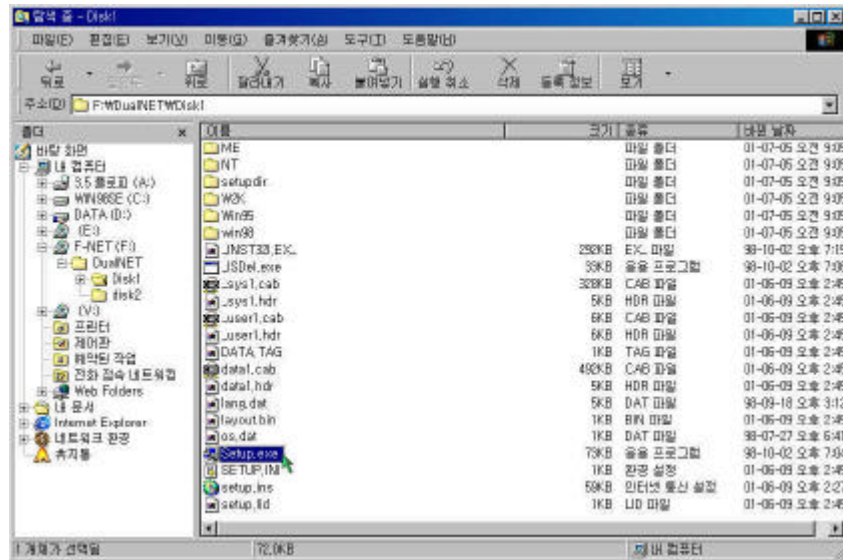


[DualNET PCI ]

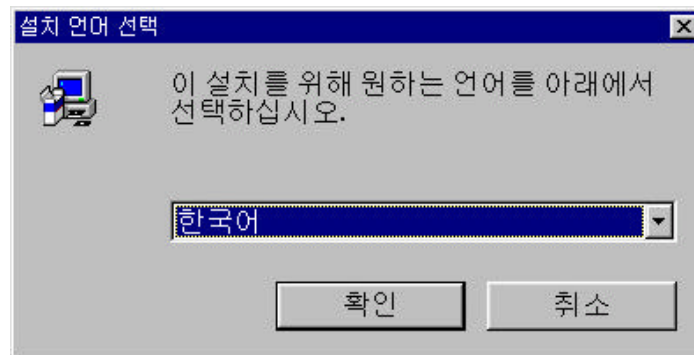
- [Status] 가 [Started ]

### 3.2 DualNET

- DualNET CD
- Setup.exe

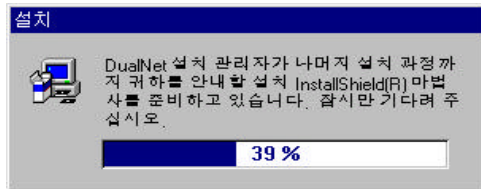


[ ]



[ ]

- DualNET [ ]

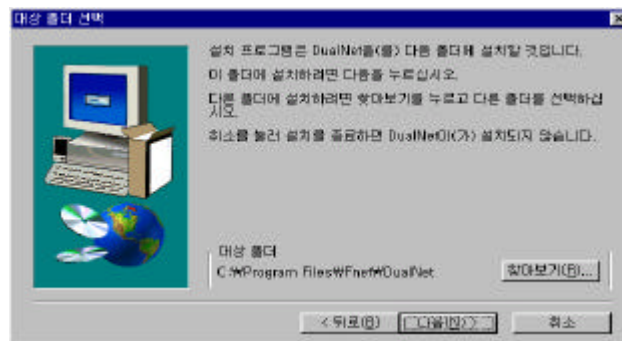


[DualNET ]



[ ]

- [ ]



[DualNET ]

- [ ]



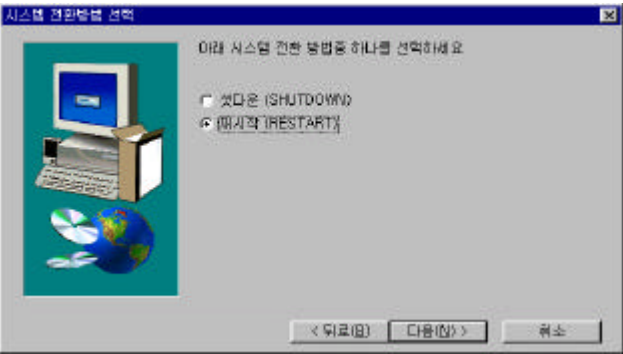
[DualNET ]

- [ ]



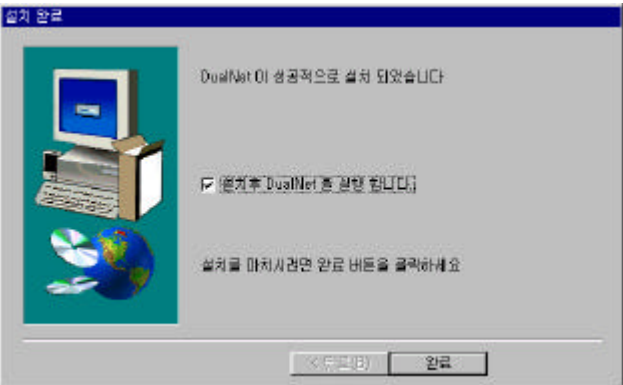
[DualINET PCI ]

-                   가 PCI                   [ DualNet PCI Board]                   [                   ]                   .



[                   /                   ]

-                   /                   [                   ]                   .



[DualINET ]

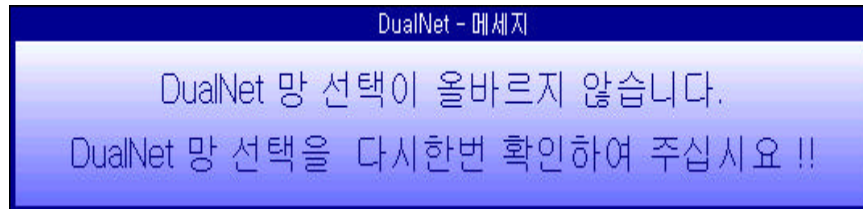
- [                   ]                   .

- 가 DualNET 가



[DualNET ]

- HDD DualNET 3.9 [ ]  
가

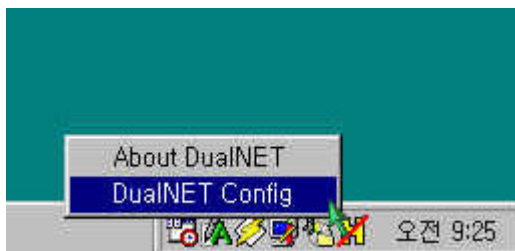


[ HDD ]

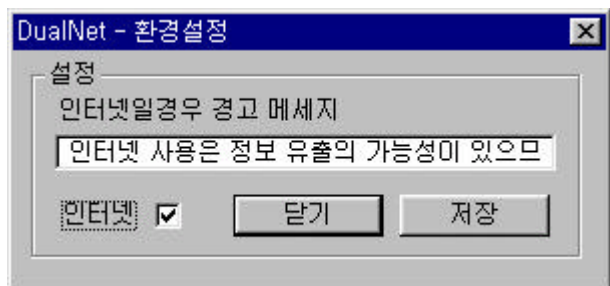
- Ctrl+Alt+Delete

- DualNET

<DualNET Config>

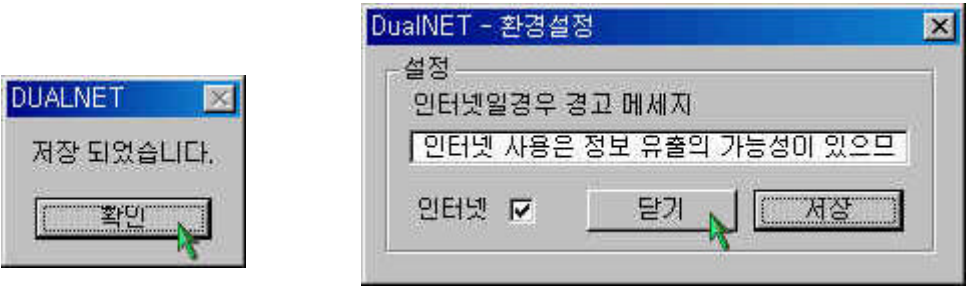


[DualNET Config ]



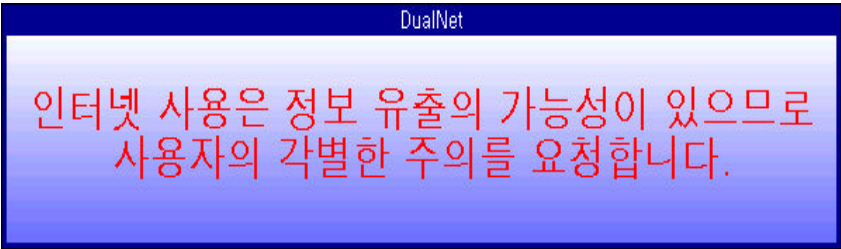
[DualNET ]

- [ ]



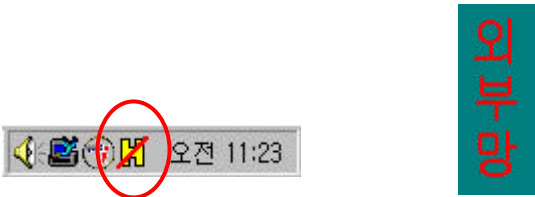
[DualNET ]

- [ ] [ ] 가 .



[ ]

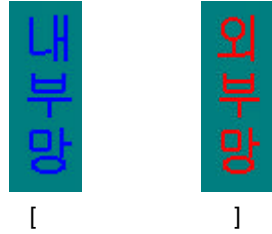
- 5 .
- 가 DualNET 가



[ HDD DualNET ]

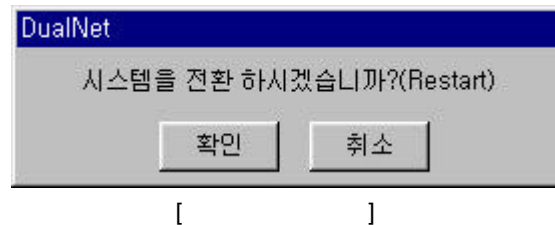
### 3.3 DualNET (Key + PCI)

-



-

가

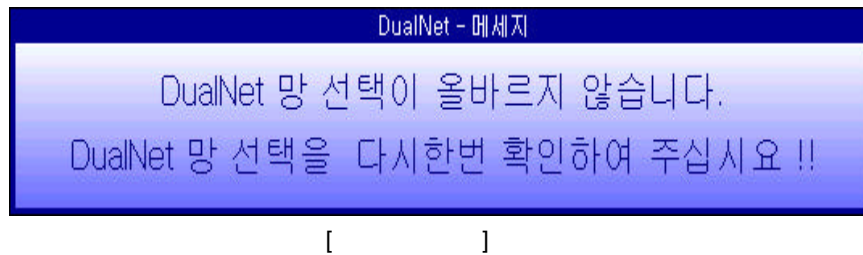


- [ ]

( )

- [ ]

가



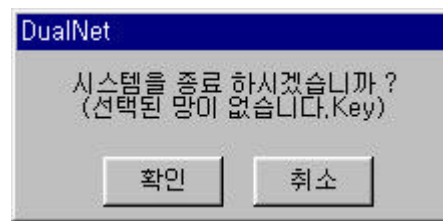
[ ]

가

-

/

가



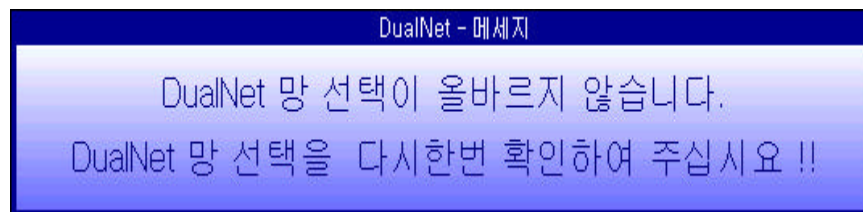
[ ]

- [ ]

/

- [ ]

가



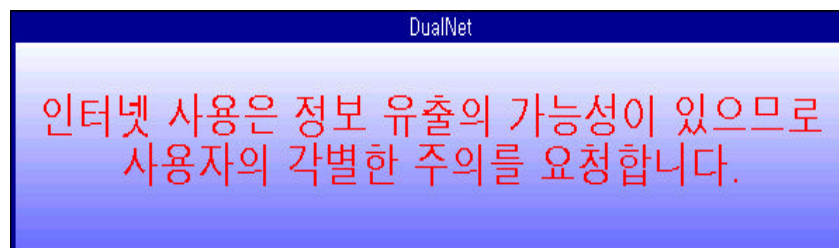
[ ]

11

[ ]

가

가 .



[ ]

4.

- BIOS 가 .
- ( ) MASTER .
- .
- BIOS Setup 가 .  
(NORMAL/LBA/LARGE)